



*Vivien
Leigh*

2013

In 1588, relations between Spain and England are at the breaking point. With the support of Queen Elizabeth I, English sea raiders such as Sir Francis Drake regularly capture Spanish merchantmen bringing gold from the New World.



Fire Over England, 1936

January

	1	2	3	4	5	6
7	8	9	10	11	12	13
14	15	16	17	18	19	20
21	22	23	24	25	26	27
28	29	30	31			



Dark Journey is a 1937 British spy film directed by Victor Saville set in the First World War. Its plot concerns two secret agents on opposite sides, played by Conrad Veidt and Vivien Leigh, who fall in love.

Dark Journey, 1937

February

				1	2	3
4	5	6	7	8	9	10
11	12	13	14	15	16	17
18	19	20	21	22	23	24
25	26	27	28			

Walker wrote that when an attempt was made to obtain Leigh's services for a film version of Cyrano de Bergerac, Laughton stated that she would have to dye her hair blonde. Leigh asked for a blonde wig, but Laughton insisted she dye her hair.



Sidewalks of London, 1938

March

					1	2	3
4	5	6	7	8	9	10	
11	12	13	14	15	16	17	
18	19	20	21	22	23	24	
25	26	27	28	29	30	31	

Gone with the Wind, first published in 1936, is a romance novel written by Margaret Mitchell, who received the Pulitzer Prize for Fiction for the book in 1937.



AUTANT EN EMPORTE LE VENT

CLARK GABLE · VIVIEN LEIGH
LESLIE HOWARD · OLIVIA DE HAVILLAND

Realisation de VICTOR FLEMING · Musique de MAX STEINER
Couleur de **TECHNICOLOR** Un film SELZNICK INTERNATIONAL
Distribue par Metra-Goldwyn-Mayer

Gone With The Wind, 1939

April

1	2	3	4	5	6	7
8	9	10	11	12	13	14
15	16	17	18	19	20	21
22	23	24	25	26	27	28
29	30					

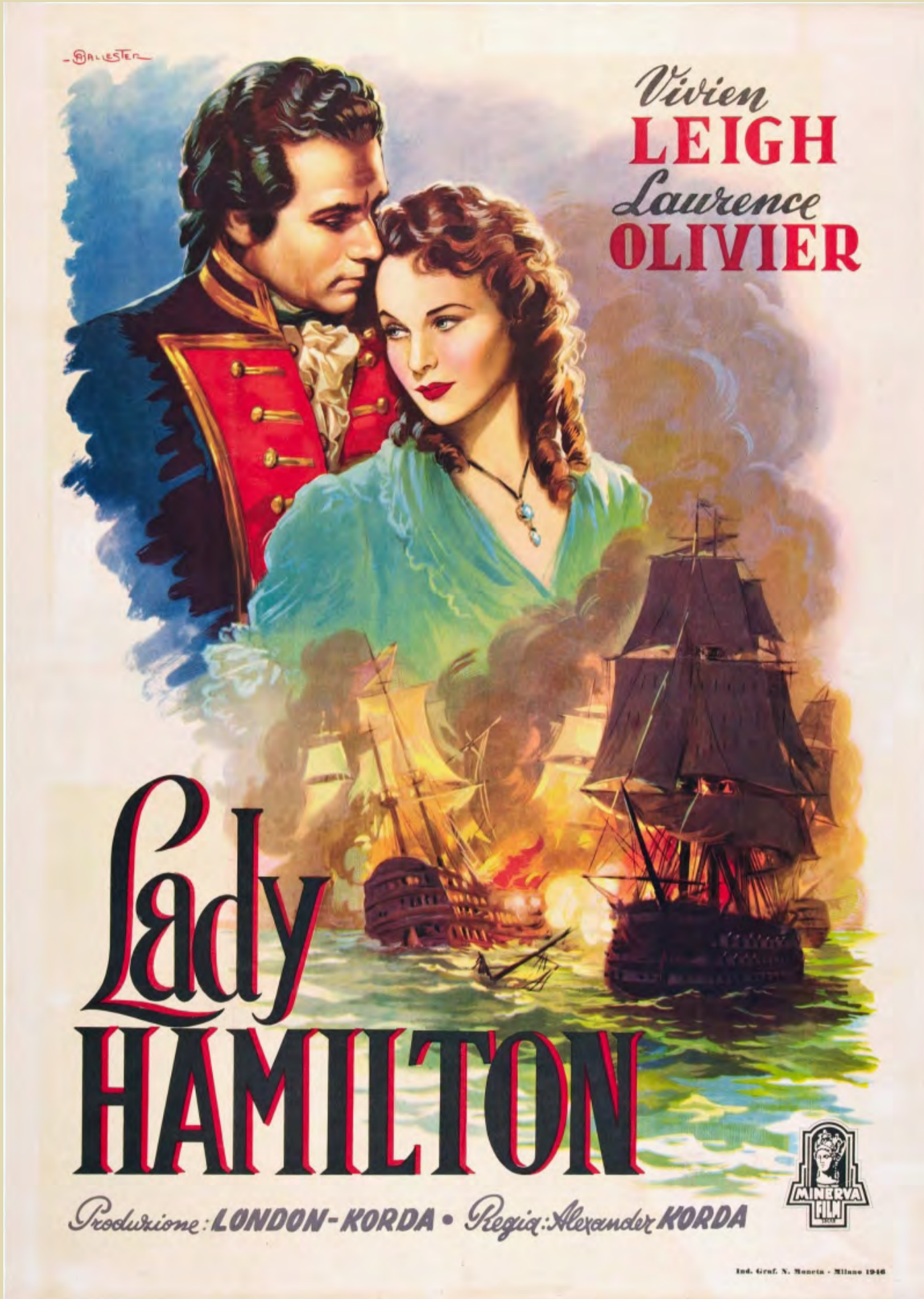
Waterloo Bridge is a road and foot traffic bridge crossing the River Thames in London, England between Blackfriars Bridge and Hungerford Bridge. The name of the bridge is in memory of the Anglo-Dutch and Prussian victory at the Battle of Waterloo in 1815.



Waterloo Bridge, 1940

May

1	2	3	4	5	6	7
6	7	8	9	10	11	12
13	14	15	16	17	18	19
20	21	22	23	24	25	26
27	28	29	30	31		



The film was made during World War II, and defines Britain's struggle against Napoleon in terms of resistance to a dictator who seeks to dominate the world.

That Hamilton Woman, 1941

June

					1	2
3	4	5	6	7	8	9
10	11	12	13	14	15	16
17	18	19	20	21	22	23
24	25	26	27	28	29	30

Cleopatra hasn't been on the throne of the pharaohs of Egypt very long when Julius Caesar pays a visit. Caesar finds the prospect of romance more tempting than he expected, since Cleopatra is a rare woman who is bright as well as beautiful.



Caesar and Cleopatra, 1945

July

1	2	3	4	5	6	7
8	9	10	11	12	13	14
15	16	17	18	19	20	21
22	23	24	25	26	27	28
29	30	31				



Anna Karenina, 1948

Anna Karenina is a novel by the Russian writer Leo Tolstoy, published in serial installments from 1873 to 1877 in the periodical The Russian Messenger. Tolstoy clashed with its editor Mikhail Katkov over political issues that arose in the final installment (Tolstoy's unpopular views of volunteers going to Serbia); therefore, the novel's first complete appearance was in book form.

August

			1	2	3	4
5	6	7	8	9	10	11
12	13	14	15	16	17	18
19	20	21	22	23	24	25
26	27	28	29	30	31	

Disturbed Blanche DuBois moves in with her sister in New Orleans and is tormented by her brutish brother-in-law while her reality crumbles around her.



A Streetcar Named Desire, 1951

September

						1
2	3	4	5	6	7	8
9	10	11	12	13	14	15
16	17	18	19	20	21	22
23	24	25	26	27	28	29
30						



Kenneth More was the only key member of the original cast to be hired for the film, as Alex Korda wanted to use names that were more recognisable to movie goers. More always felt this was a mistake, particularly the casting of Vivien Leigh rather than Peggy Ashcroft.

The Deep Blue Sea, 1955

October

	1	2	3	4	5	6
7	8	9	10	11	12	13
14	15	16	17	18	19	20
21	22	23	24	25	26	27
28	29	30	31			

Karen Stone (Vivien Leigh), an actress, and her businessman husband are off on holiday to Rome. On the plane, her husband suffers a fatal heart attack.



The Roman Spring of Mrs. Stone, 1961

November

					1	2	3
4	5	6	7	8	9	10	
11	12	13	14	15	16	17	
18	19	20	21	22	23	24	
25	26	27	28	29	30		



The ship of fools is an allegory that has long been a fixture in Western literature and art. The allegory depicts a vessel populated by human inhabitants who are deranged, frivolous, or oblivious passengers aboard a ship without a pilot, and seemingly ignorant of their own direction.

Ship of Fools, 1965

December

						1
2	3	4	5	6	7	8
9	10	11	12	13	14	15
16	17	18	19	20	21	22
23	24	25	26	27	28	29
30	31					