

# PORTFOLIO

## CONTENT:

### **Student's projects**

Projects made during an education period in Moscow State University of Geodesy and Cartography, up 2001 to 2007 years. Chapter includes few examples of projects from different levels of education.

### **Moscow after graduated projects**

Projects made during a period of working in Moscow office up 2007 to 2008 years. Chapter includes few examples of projects, two short sketches of private houses and one serious big urban planning work.

### **Abroad after graduated projects**

Projects made during a period of working in Shanghai office up 2007 to 2008 years. Chapter includes few examples of projects, one urban planning design work and one architectural design.

### **Visualization**

Pictures made during a period of working in "SP-Graphics" office in 2006-2007 years. Works made with Adobe Photoshop and 3Ds Max. Projects inside this chapter belong to others authors, only visualization are made by me.

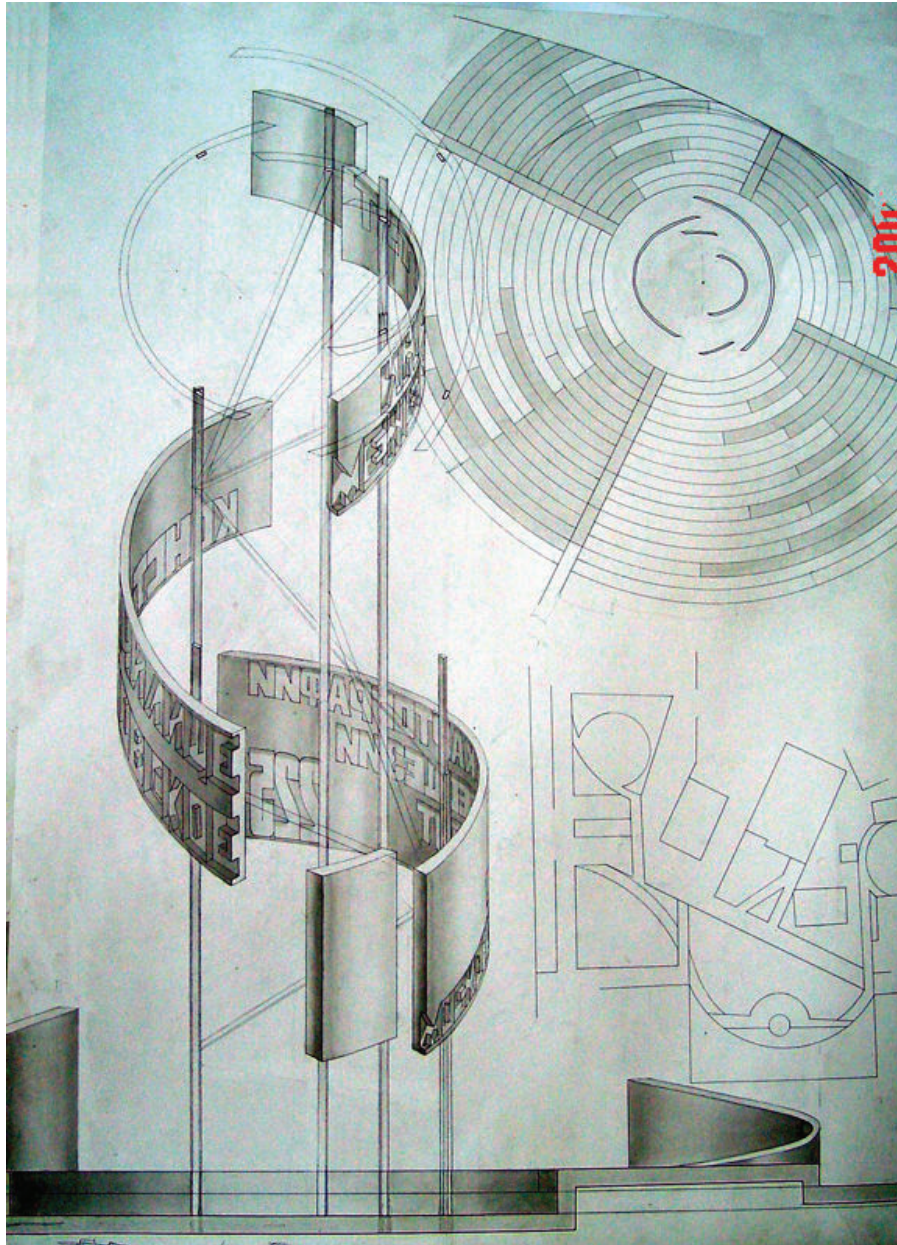
## Student's projects

Moscow after graduated projects

Abroad after graduated projects

Visualization

STRETCHER



## MONUMENT

The project was completed in the second year of the institution, in 2002.

As part of the project requirements students were invited to make a monument in honor of the 225th anniversary of the university. The university courtyard was the proposed site. I chose an area away from the main sidewalk that cut through the yard. The site is a green undeveloped zone.

In order to attract more attention to the monument from students and townspeople, it was decided not to install a commemorative plaque, but to create a peaceful environment for the rest of students and townspeople. As an integral part of such an environment, the fountain became its centerpiece. The fountain alone creates the necessary atmosphere, because the sound of falling water produces a calming and relaxing effect.

## Student's projects

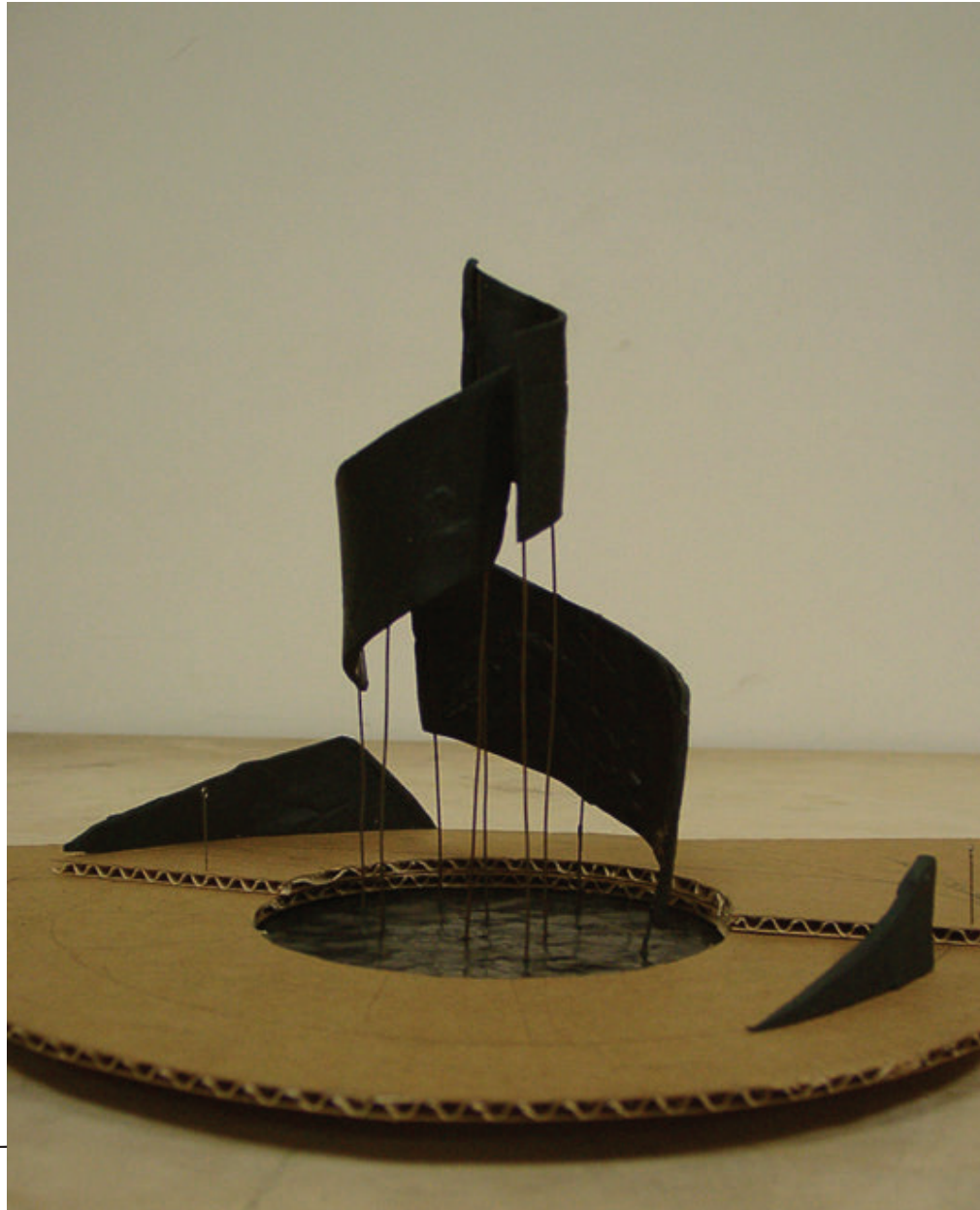
Moscow after graduated projects

Abroad after graduated projects

Visualization

## MONUMENT

Structurally, the fountain was made of metal rods, rising from a round body of water and glass planes fixed on the rods. Information about the university and the date of its founding was visible through the water, which steamed down from these planes. Text was embossed directly on the glass. Around the fountain was a ring of benches. An area of curved track was laid through the green zone.



MODEL



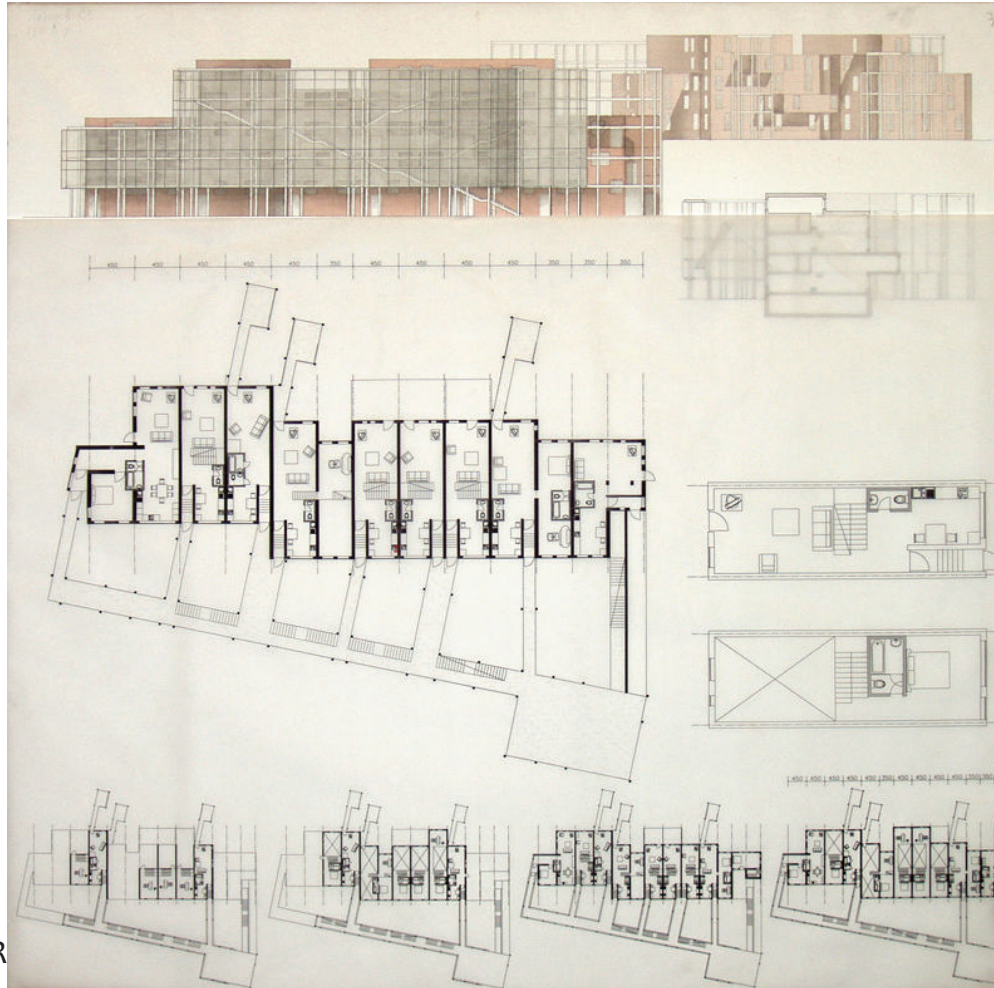
## FIVE STOREY RESIDENTIAL BUILDING

### Student's projects

Moscow after graduated projects

Abroad after graduated projects

Visualization



STRETCHER

The project was completed in the fourth year of the institution, in 2004.

The site was in a suburb of Moscow. The south side site was contiguous with a busy highway; from the north side it faced the Moscow-River. According to these conditions, each apartment should have windows facing both sides. The south side window ensured insulation, while the north side provided views of the river. Thus, the apartments were made to extend to the width of the whole body. Only living cells formed a part of the shell. As wood creates feeling of coziness, wooden panels were chosen for lining the walls.

All public space and communication have been grouped in a separate volume, which was placed from the road side. To access the sunlight in the apartment, this volume has been separated and moved closer to the road. Outwardly, it was a glass gallery with staircases. This gallery extended from west to east along the entire body of the building, presenting a barrier to noise from the road.

## Student's projects

Moscow after graduated projects

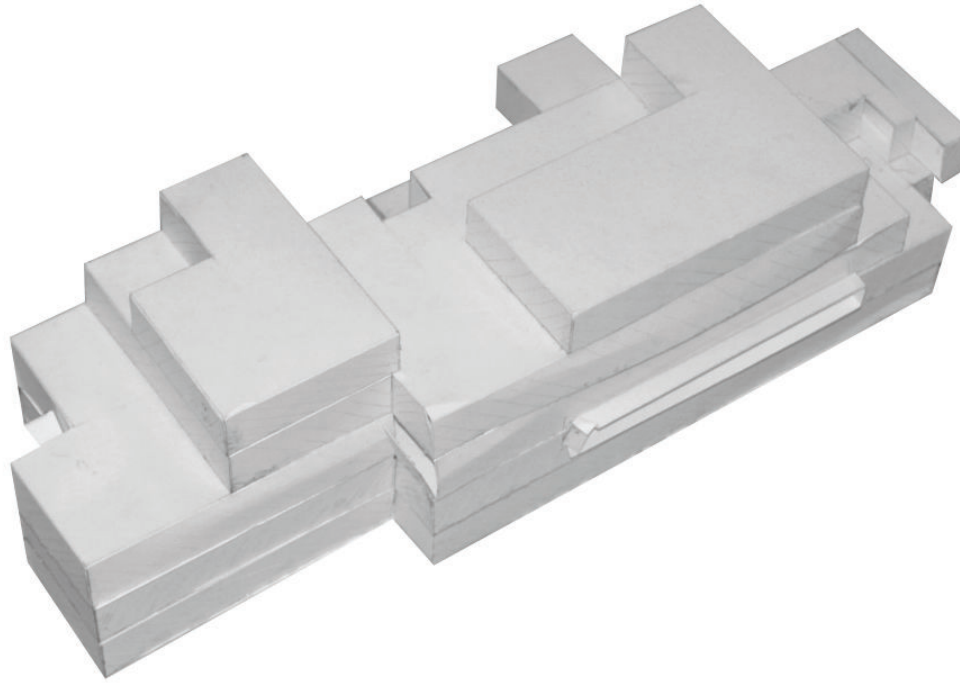
Abroad after graduated projects

Visualization

# FIVE STOREY RESIDENTIAL BUILDING

Two of the volumes are interconnected by bridges. In order to economize the number of bridges, almost all apartments have been designed in two levels. It also promoted a better penetration of sunlight from the south side.

After the public glass volume was moved to the road between it, the main volume of the home formed the yard space.



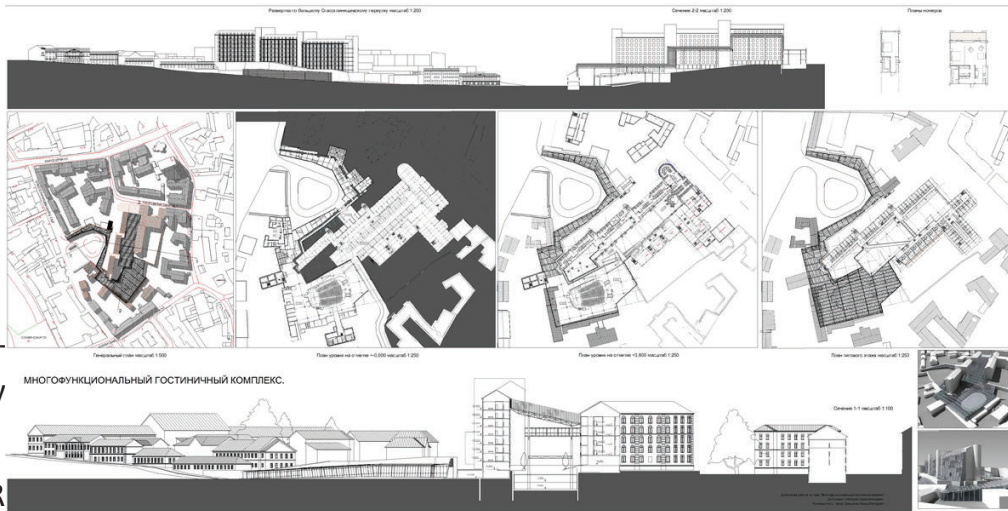
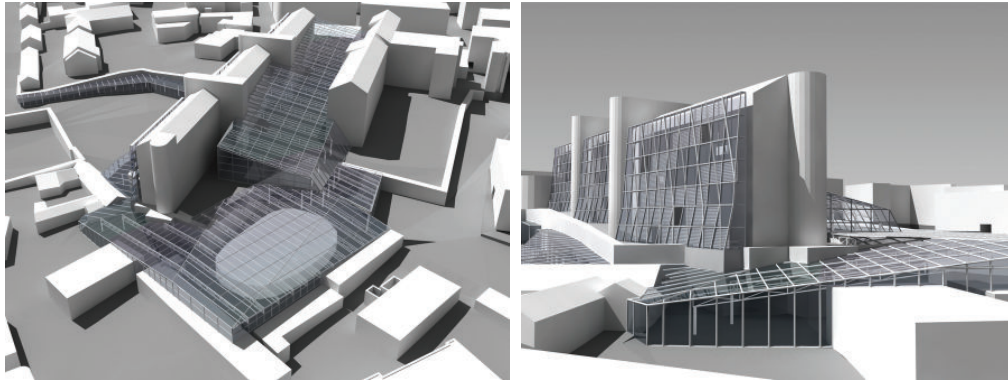
WORKING MODEL  
FOTO

## Student's projects

Moscow after graduated projects

Abroad after graduated projects

Visualization



## HOTEL

The project was completed on the sixth year of the institution, in 2007.

The site is situated in the historic center of the city and falls under a large number of restrictions imposed on new construction. The area is typical for the center of Moscow, with low-storey buildings constructed during different time periods, ranging from between the 18th century to the 1930s.

In addition, a feature of the site is a significant difference of elevation. Running from north to south, there is 21-meter variance. There are a few retaining walls on the site. These walls have become the main theme of this work.

The site generally consists of a large number of historical lands totally unrelated to each other. The entrance to them can be accessed only from the street. Almost all of them have retaining walls from the yard's side. Thus, the whole site has a brightly pronounced terrace character. Normally sheds and other household's buildings were added to retaining walls.

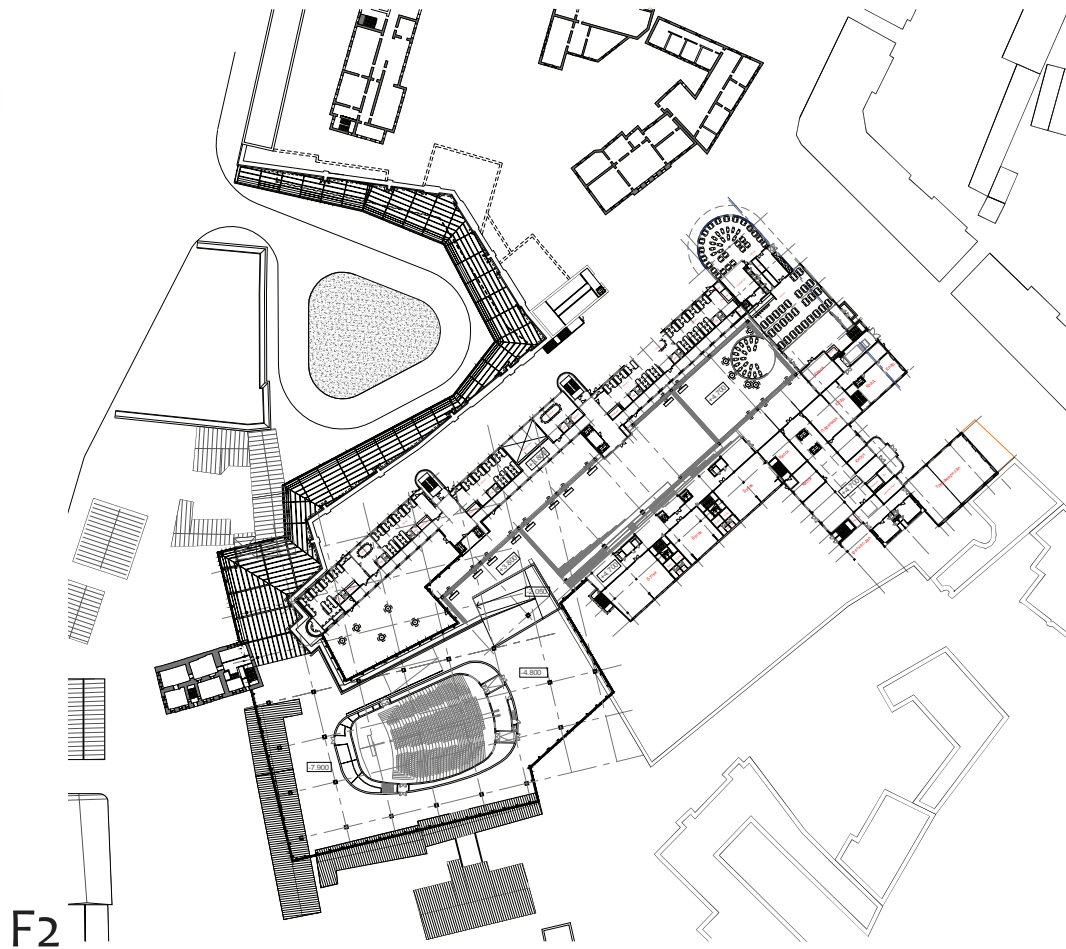


## Student's projects

Moscow after graduated projects

Abroad after graduated projects

Visualization



## HOTEL

These walls are the only common feature among individual land tenure. Connecting individual properties was the reason to use them. Out of the dirty backyard areas, the walls had become the main public passages. The retaining walls were to be cleared out of the old household's buildings, renovated and expanded with a glass roof and the wall.

Inside the existing historic buildings and yards were placed the shared public areas of the new hotel, such as restaurants, office centers, shopping and exhibition spaces. The hotel rooms themselves were placed in the seven-storey building built in 1930 and located in the central part of the site.

Thus, a new hotel didn't cause appreciable harm to the existing historic building. It only used and modernized the established urban structure.



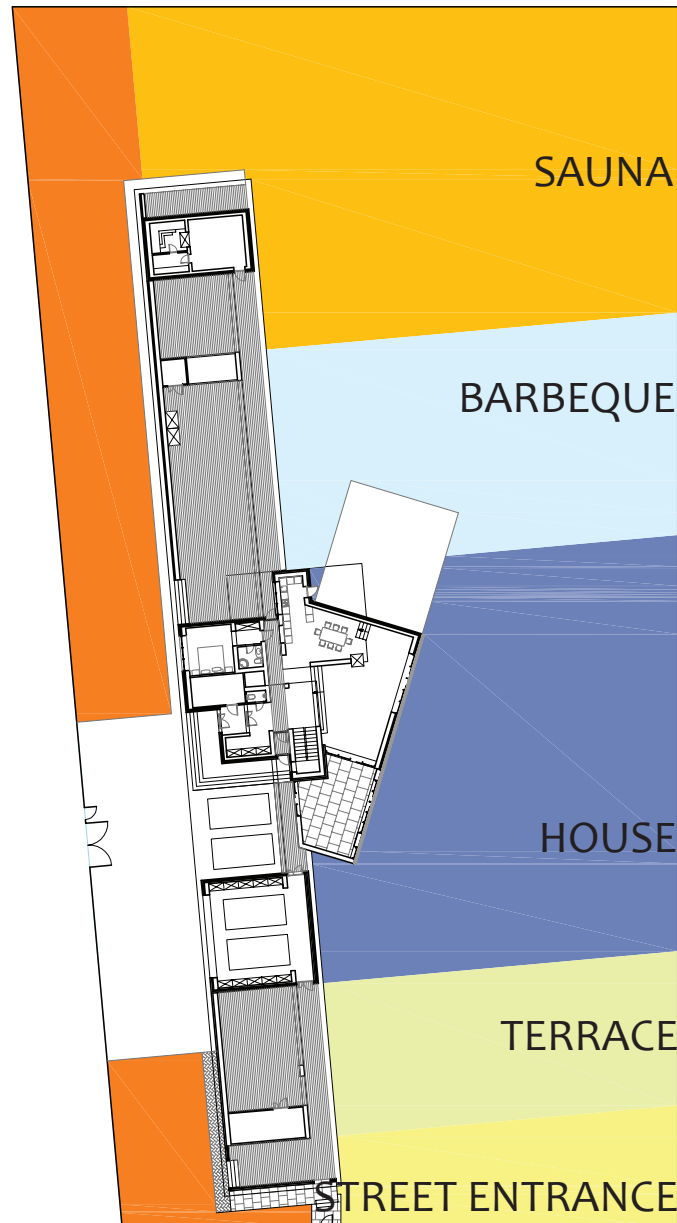
Student's projects

## Moscow after graduated projects

Abroad after graduated projects

Visualization

SITEPLAN



PDF created with pdfFactory Pro trial version [www.pdffactory.com](http://www.pdffactory.com)

## PRIVATE HOUSE №1

The project was completed in 2007.

The project called for designing a residential village located in the Moscow region. The north side of the site is contiguous with the forest, while the east is situated next to a neighboring site. An internal village street runs along the south side and a busy road runs along the west side of the lot.

In order to protect the site from a busy road, it was proposed to build up the wall along the whole west side of the site. In order to prevent a feeling of isolation, the wall moves further inland, turning from the fence into the wall of home. The space formed in between the western boundary of the site and the wall became a front entrance area. Guest parking and a small garden are also in this space.

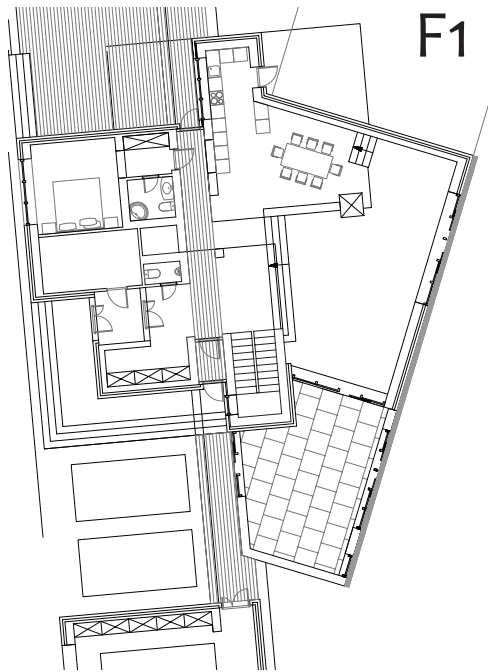
The roof added to the wall from east side. It formed an open gallery space. The site is divided into areas of different functional purposes, with each located one after another in the direction from north to south.

Student's projects

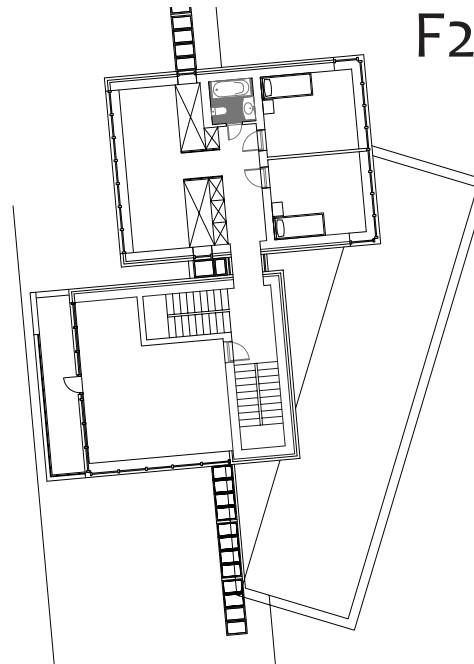
**Moscow after graduated projects**

Abroad after graduated projects

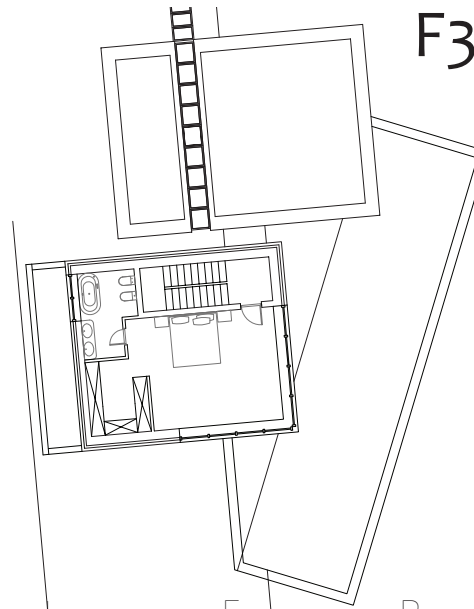
Visualization



F1



F2



F3

## PRIVATE HOUSE №1

There is an entrance from the village street on the south side of the site. Then there is a terrace, a shed for garden tools, a garage, outdoor parking, house, a barbecue area, a woodshed and sauna. A gallery connects all these areas.

The house consists of three volumes. The first one has only one level and disclosed into the garden. Inside it there is a living room, a dining room and a verandah. The second volume has two storeys. On the first floor there is a kitchen, a guest bedroom and the boiler. On the second – there are two children's rooms and one play room. The third volume has three storeys. The first floor has an entrance hall, a front hall and a staircase. The second floor has an office, while the third has a master bedroom and a master bathroom.

The first volume is designed in traditional style with brick walls and tiling. The other two are decorated in a contemporary style.

PLANS

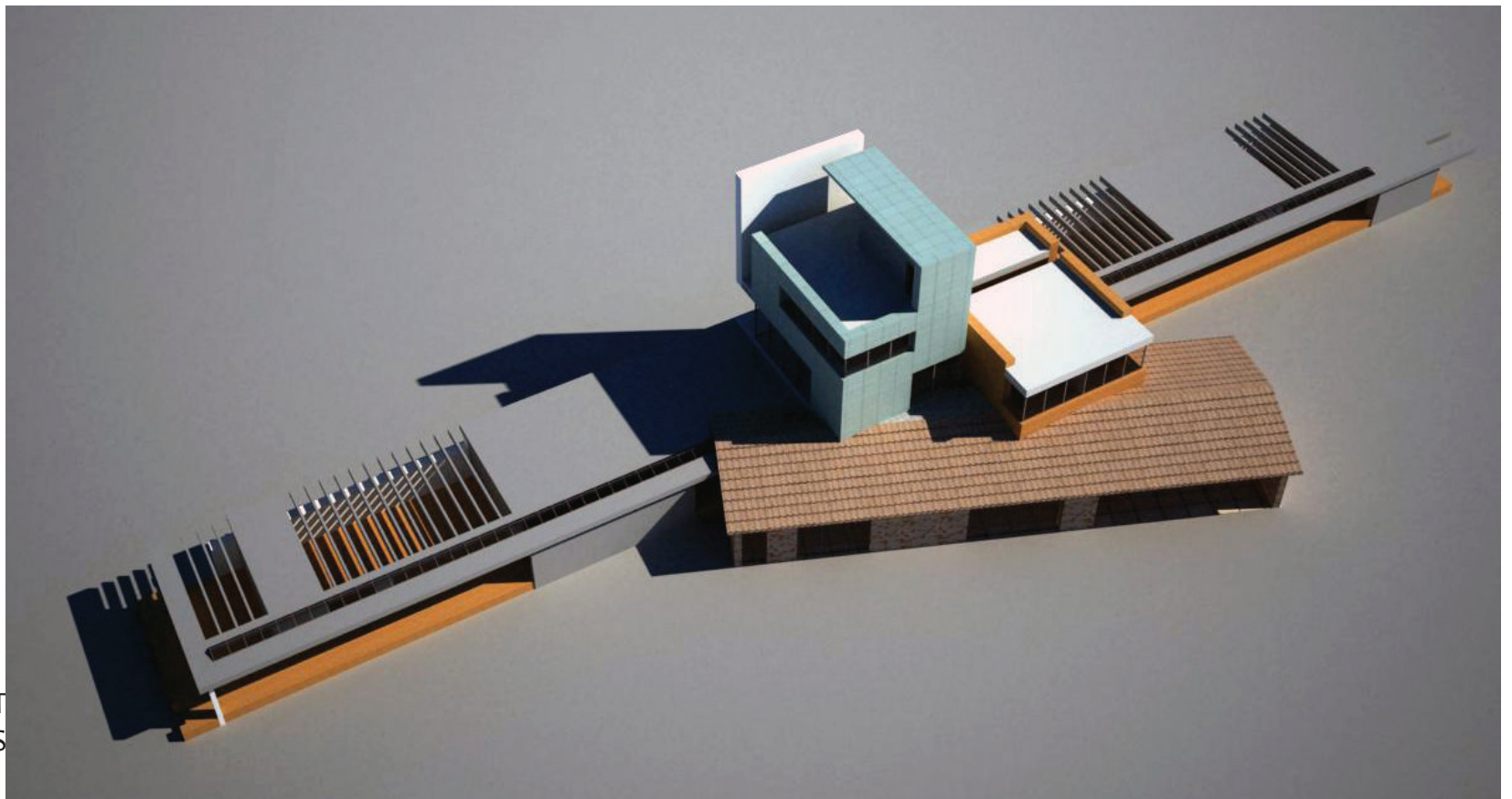
Student's projects

**Moscow after graduated projects**

Abroad after graduated projects

Visualization

## PRIVATE HOUSE №1



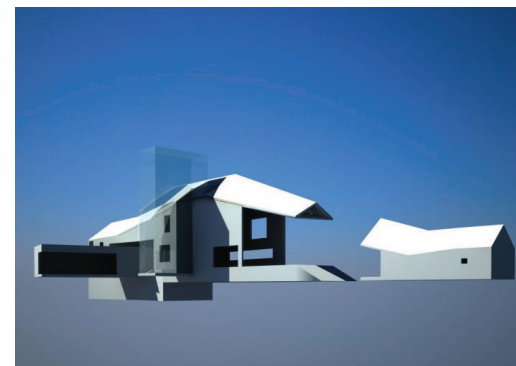
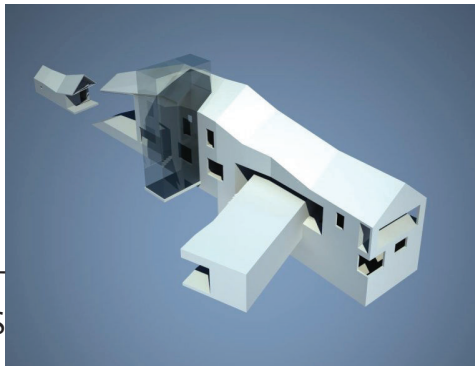
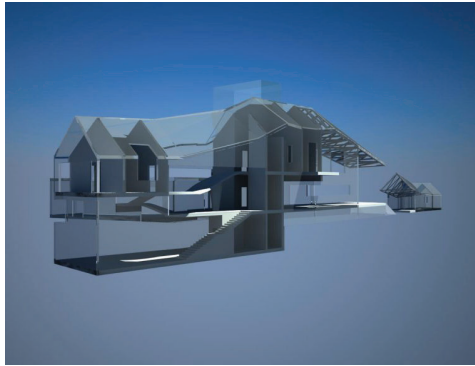
CONCEPT  
VIEWS

Student's projects

## Moscow after graduated projects

Abroad after graduated projects

Visualization



CONCEPT  
VIEWS

## PRIVATE HOUSE №2

The project was completed in 2007.

The project was implemented on a competitive basis. According to the terms of the contest, information about the site was not granted, except that it is in the countryside. But a very clear description of the premises (such as square footage, number of rooms, etc) and its location in the body of the building were given.

The form of the house is a modern take on the traditional silhouette of a country home, and resolved in the form of a sculptural mass.

The front hall, the guest bedroom, conservatory, kitchen, living room and terrace are located on the first floor. The remaining space is left open for the penetration of sunlight into the basement. The front hall staircase leads down to the billiard room, bar and office, which are located on the basement floor. In addition to these there are the technical facilities.



Student's projects

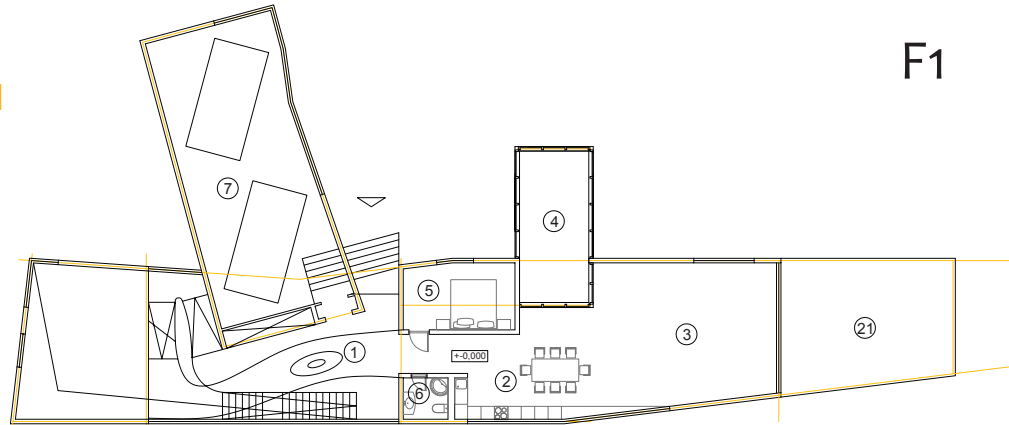
**Moscow after graduated projects**

Abroad after graduated projects

Visualization

## PRIVATE HOUSE №2

F1

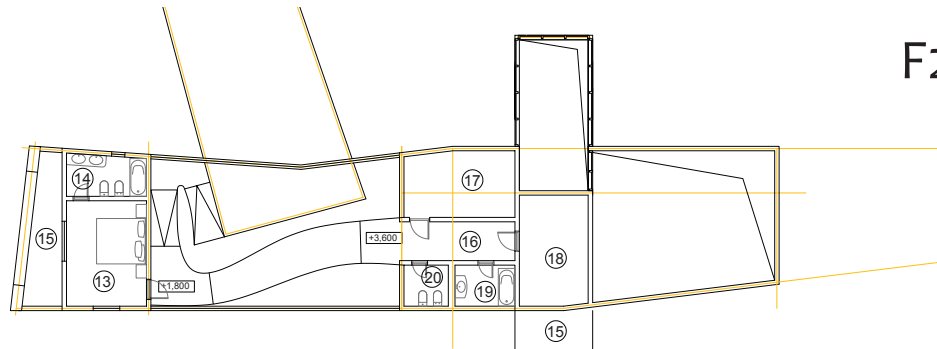


The second hallway from front hall leads by ramp up on the half floor height. Here is a Master bedroom. The ramp continues to move up another half of the floor. Here are two children's rooms and bathrooms.

At a small distance from the house is a sauna. Its volume is determined as a sequential of the main shape of the home.

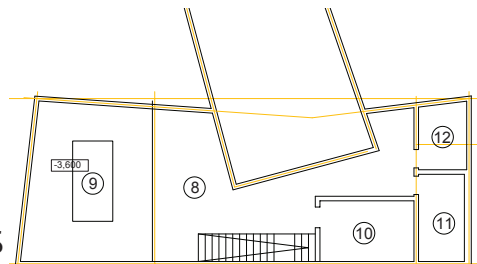
Parking is created by making additions to the house.

F2



B1

PLANS



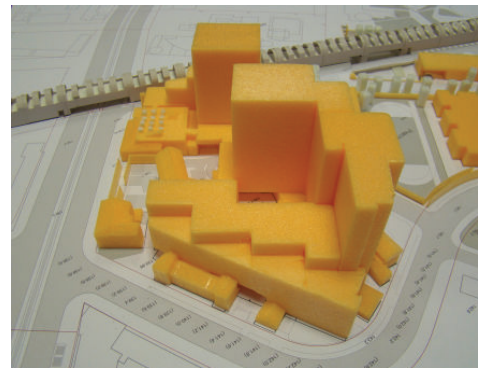
## Residential area preproject developmental work

Student's projects

**Moscow after graduated projects**

Abroad after graduated projects

Visualization



MODEL  
PHOTOS

The project was completed within the architectural team with Kaverin NR (workshop leader), Kaverina OA (Chief Architect) and Isachenko SN (architect) in 2008.

The lot for design is located in the central part of Moscow, close to the historic center, with a construction area of 14.5 hectares. From the southwest side, the site is contiguous with the railway line. Consequently, it was decided to use this part of the area for commercial and public buildings, service buildings and garages. The remaining territory was filled with houses.

Linear urban structures afforded the maximum number of square meters. The houses were oriented in order to provide maximum insulation. At the level of the first and second floors of this structure are added volumes of municipal supplies. These were orientated perpendicular to the main direction of building. Thus, the system of yards so needed for a comfortable habitation in the residential area was created.

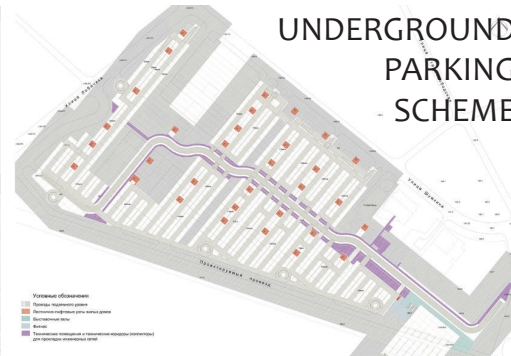
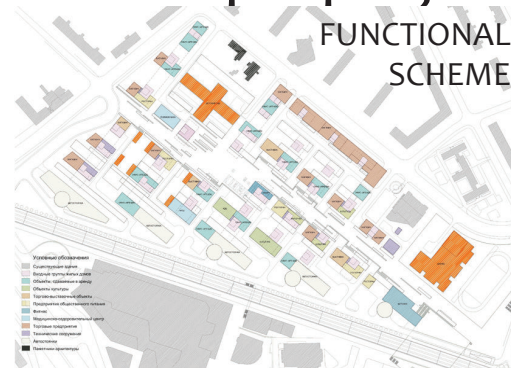
Student's projects

**Moscow after graduated projects**

Abroad after graduated projects

Visualization

## Residential area preproject developmental work



SCHEMATIC  
PLANS

A pedestrian boulevard passes in the middle of the quarter from a south-east to north-west direction and leads to the park «Sokolniki». A river theme was taken as a basis for the design of the boulevard.

Two levels of underground parking were planned to be built under the entire site area. In order to service the parking lots and the loading of stores, a thoroughfare was constructed directly under the pedestrian boulevard.



## Jiading governmental and offices areas

Student's projects

Moscow after graduated projects

**Abroad after graduated projects**

Visualization

SITEPLAN



The project was completed in 2008.

The site occupies a central position in one of the suburban areas of Shanghai. It is formed from six landholdings. In the middle part of it, through two of the six lands runs a park zone. The remaining four lands are located in pairs on both sides of the park area.

The customer planned to build government and office complexes on the land. The government complex included the district council and the tax department. Analysis of the surrounding buildings showed its fragmentation into separate clusters, limited on all sides by streets. Inside each cluster is its own architectural composition. There are no connections between the clusters.

The projected complex should become a landmark for the entire region. Nevertheless, restrictions prohibited developers from erecting one of the tallest buildings in the area.



## Jiading governmental and offices areas

Student's projects

Moscow after graduated projects

**Abroad after graduated projects**

Visualization

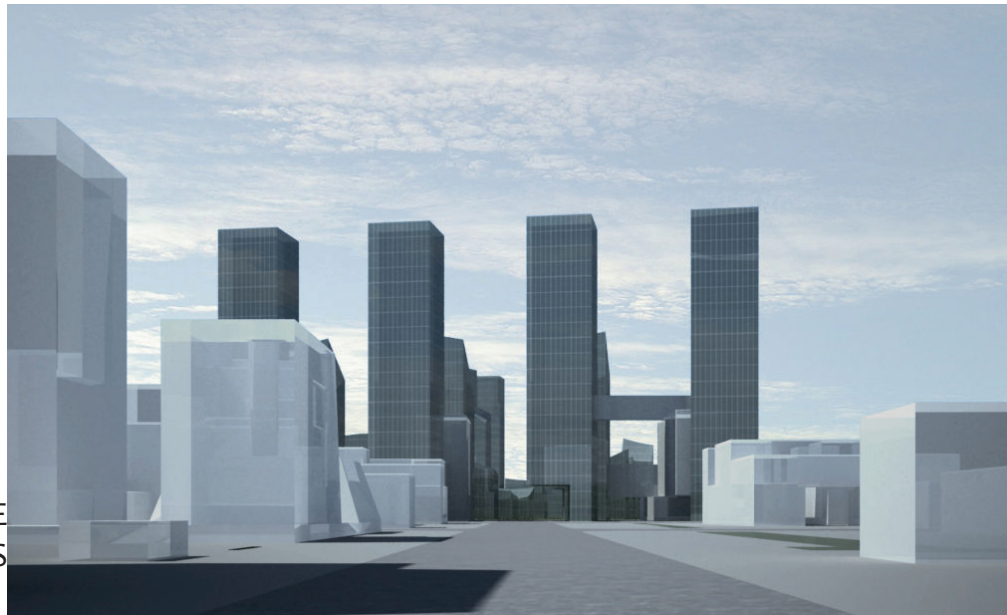


Taller buildings had already been designed on the eastern tip of the park area, passing through the area and that site in particular. Plus, the analysis showed that this dominating high-altitude feature was designed to offset the axis of the green area.

Joining six construction sites by a one major form offered an opportunity to dominate the surrounding buildings through the mass, not height. As a result, a mega cluster was created, which was an order of scale higher than the surrounding buildings. Then, this cluster was slightly rotated relative to the existing network of streets. It was pointing at the axle carried out through the planned subway station (pedestrian's entrance to the area) and height dominant of the area. This further emphasized the significance of the projected object in the area.

Then the volume was cut into similar towers. Next was created a three-dimensional plane, which took a sharp downward turn in the park area.

PERSPECTIVE  
VIEWS



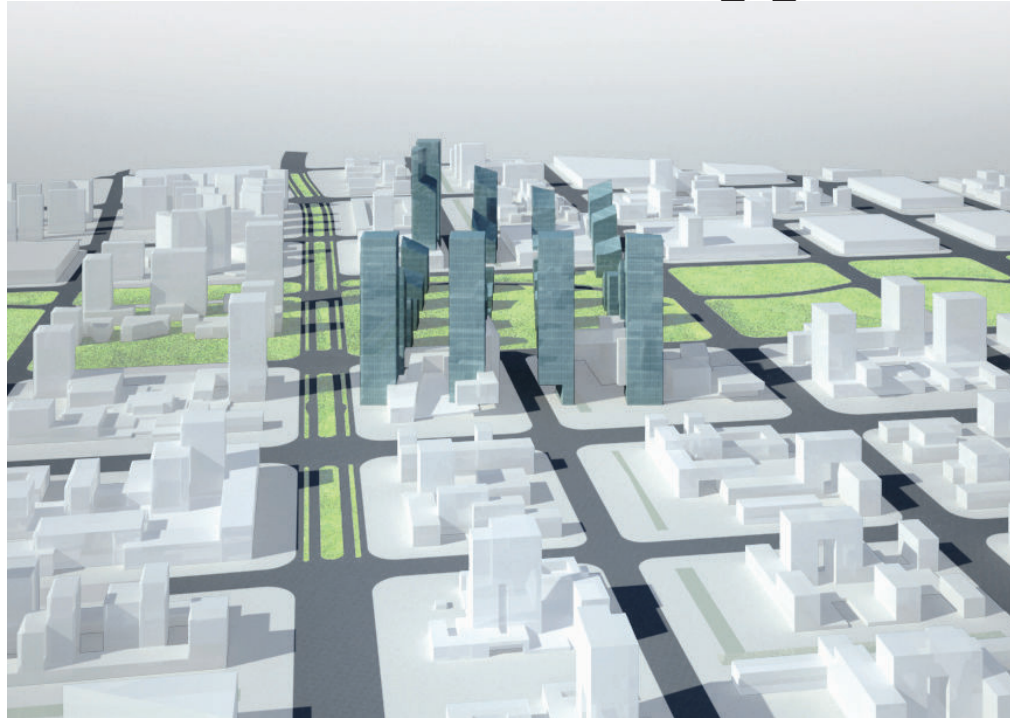
## Jiading governmental and offices areas

Student's projects

Moscow after graduated projects

**Abroad after graduated projects**

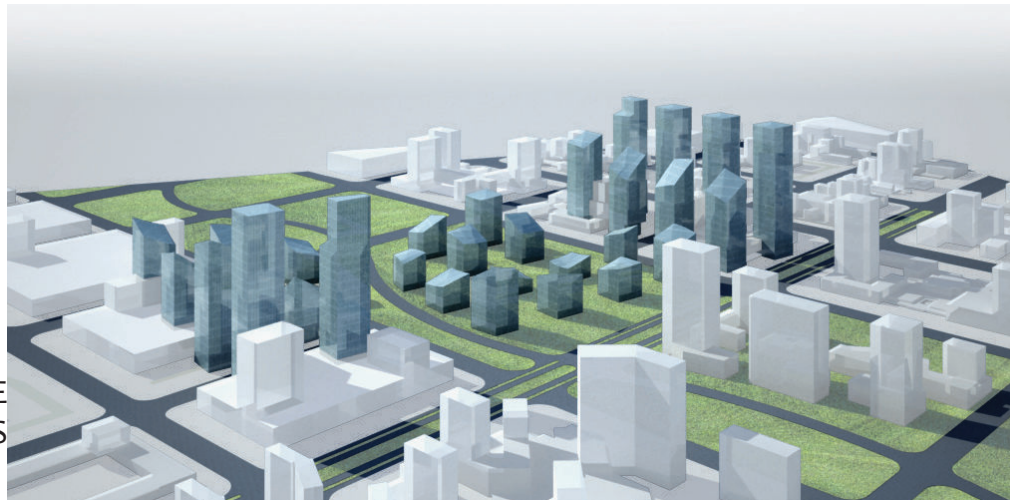
Visualization



All the towers were trimmed by it. Only towers located near the district council saved the height of initial volume. In the park area towers were truncated to two or three floors and become a park pavilions. These pavilions are exhibition spaces for the governmental and offices complexes, as well as restaurants and cafes for townspeople resting in the park. Thus, the cultural function appeared between the government and business.

At the level of the low-floor building, all parts, except for the parks, are complemented by clusters of similar size and scale with the surrounding clusters. This accomplished the feeling that the mega cluster sprouts through the existing structure of urban development.

PERSPECTIVE  
VIEWS



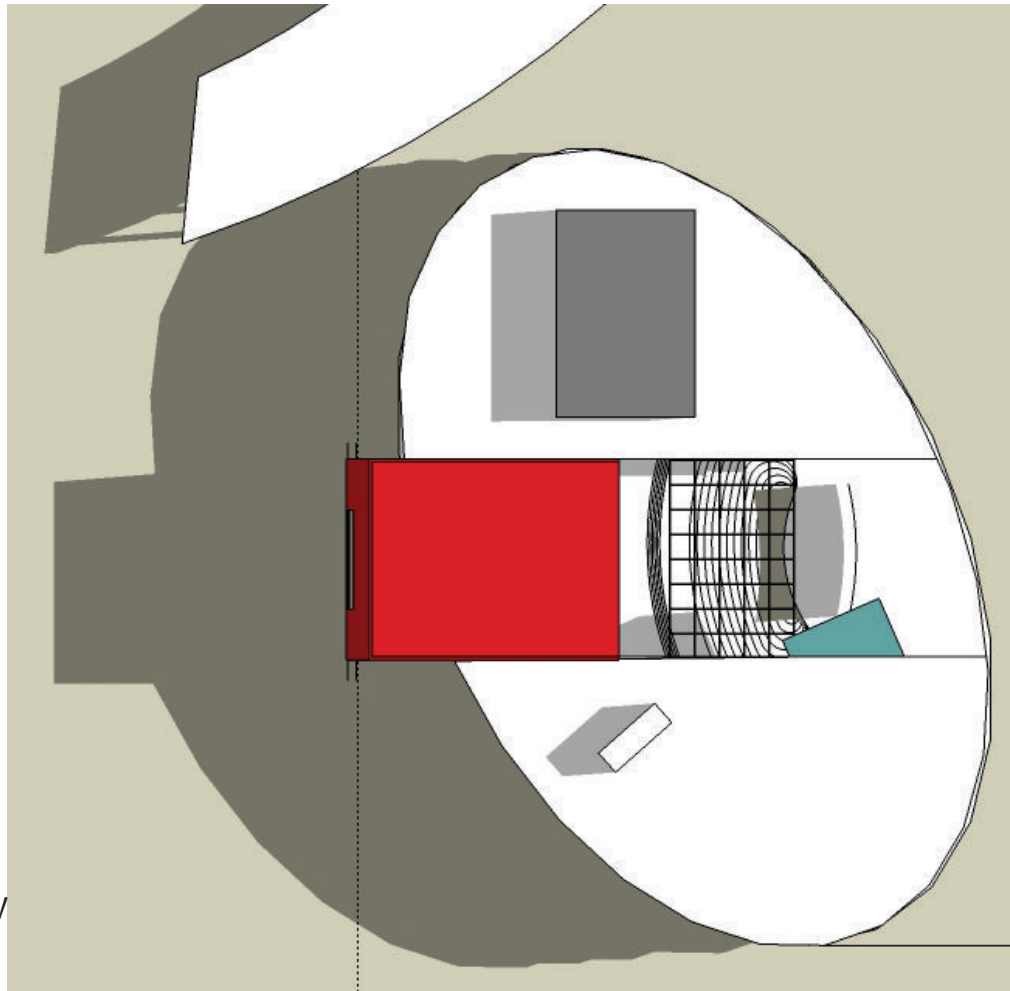
Student's projects

Moscow after graduated projects

**Abroad after graduated projects**

Visualization

TOP VIEW



## Expocenter

The project was completed in 2008.

The lot for design is located in the central part of the Industrial and Research areas. The building should be at the center of the area. The huge office complex is already located on the adjacent land. The design of the new venue in plan is an ellipse. The building is twenty-four meters high. Within this volume fits another volume. In the plan it is also an ellipse, but it is rotated relative to the first. Inside this second volume, starting with the second level, there are exhibition areas. In the remaining space, filled with sunlight, are the administrative offices. There are no stories as such, the space is one. There are only levels - segments of the ellipse. Each level is higher than the previous one for half of the floor height.



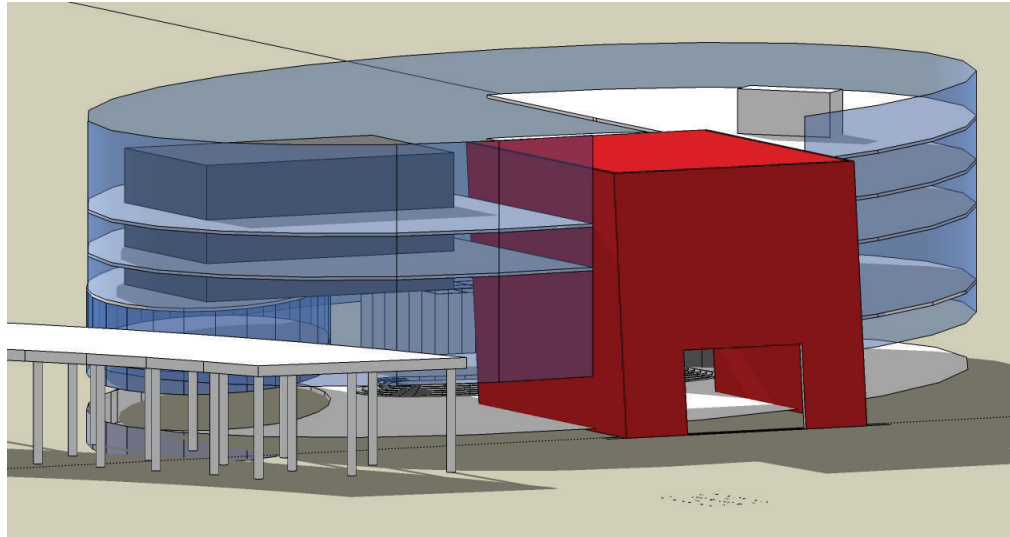
# Expocenter

Student's projects

Moscow after graduated projects

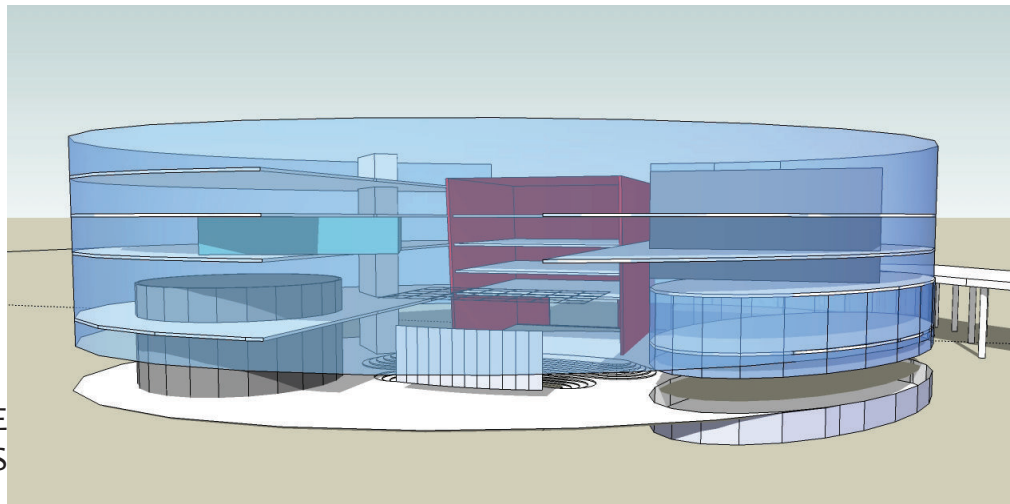
**Abroad after graduated projects**

Visualization



All the floors are united by a common high open space. Downstairs is placed a conference hall. The entrance floor is a single open space.

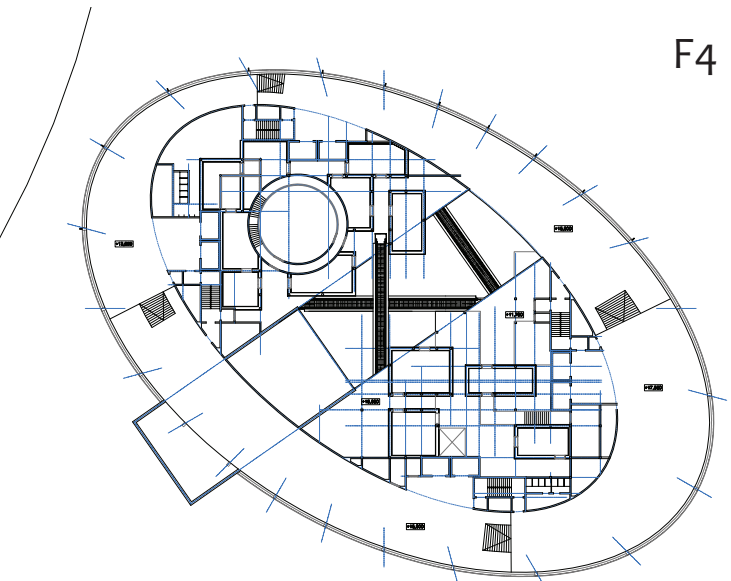
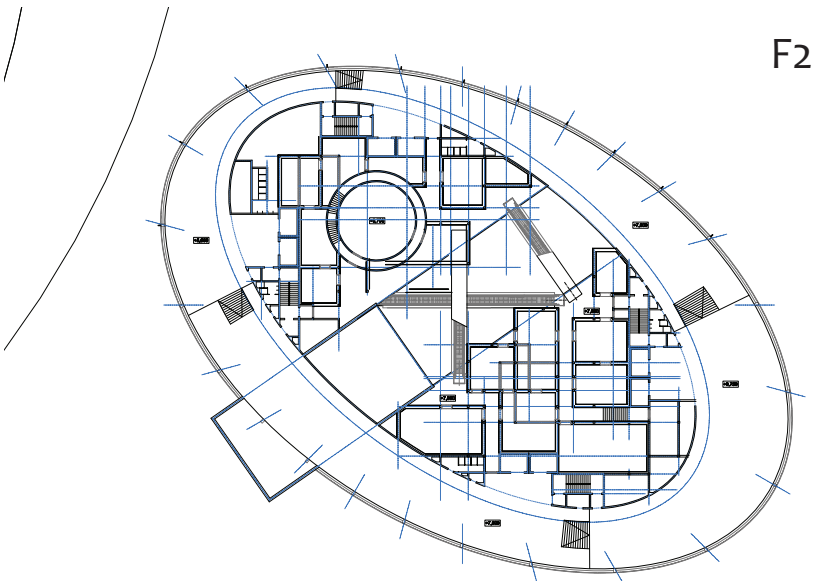
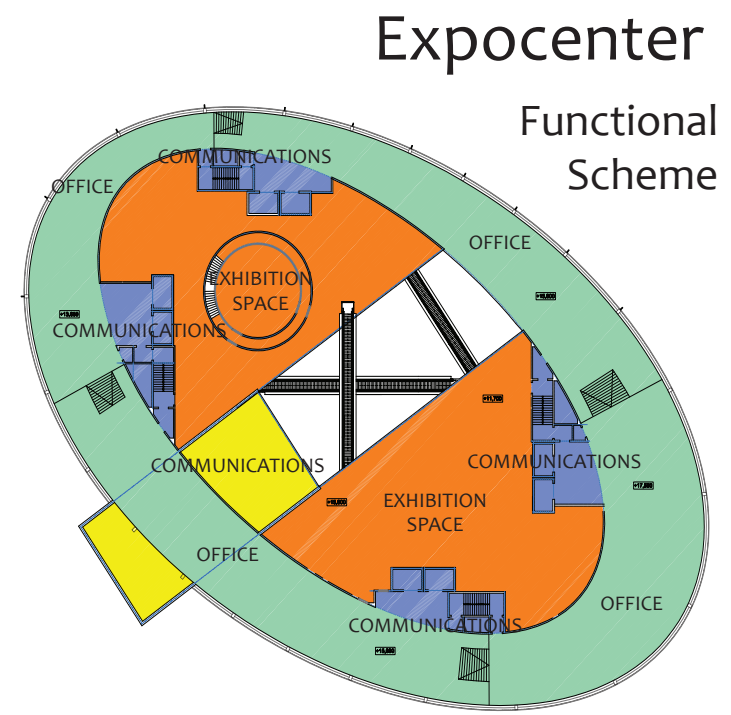
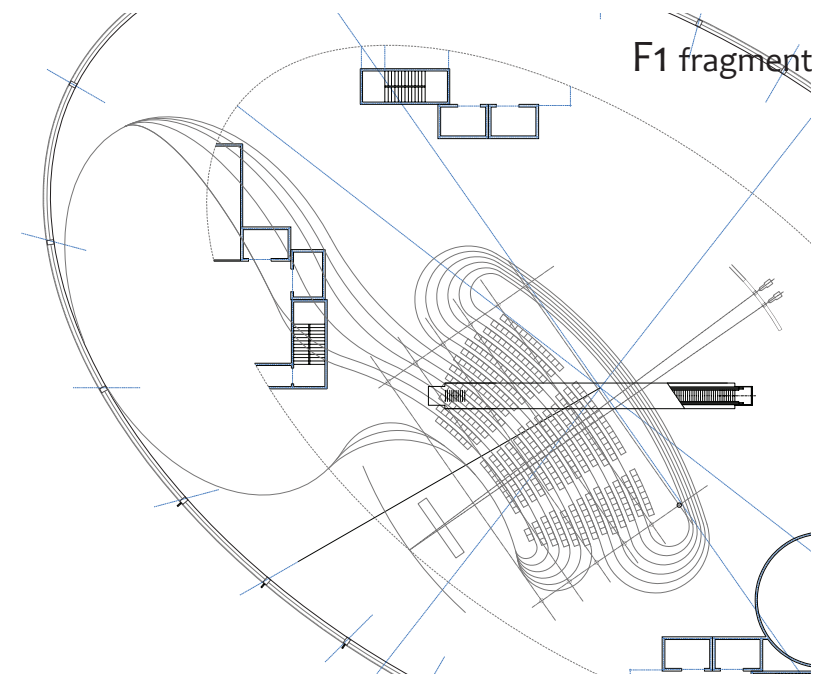
An outdoor colonnade is adjacent to the new venue from the west side. It forms a single shape with the existing site adjacent to the volume of public appointments.



PERSPECTIVE  
VIEWS



- Student's projects
- Moscow after graduated projects
- Abroad after graduated projects
- Visualization



PLANS